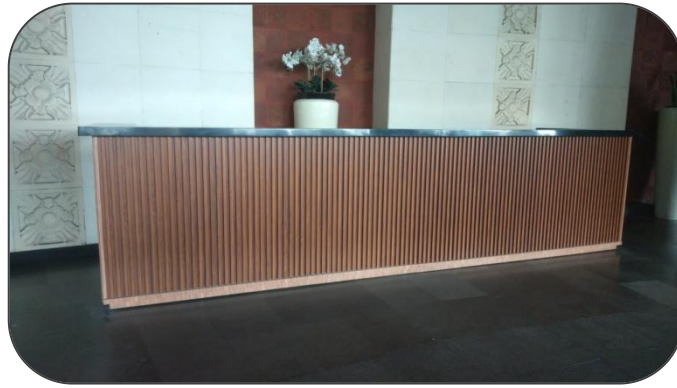


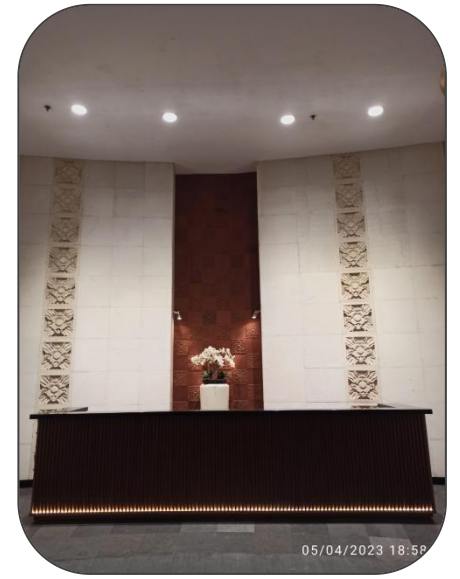
## 1. PENEMPATAN MEJA RESEPSIONIS DI AREA DROP OFF LOBBY



**BEFORE**



**AFTER**



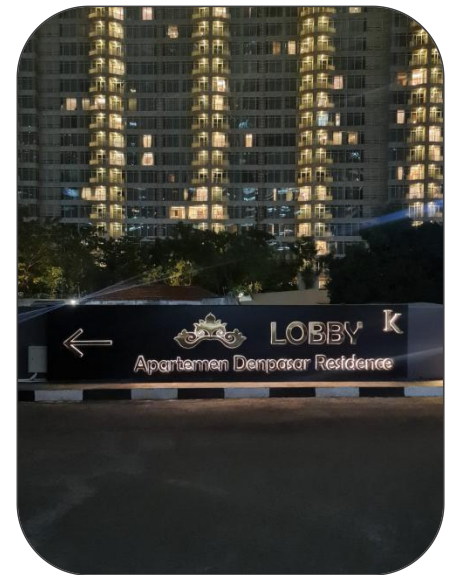
## 2. PEMBUATAN SIGNAGE BILLBOARD LOBBY APARTEMEN



**BEFORE**



**AFTER**



## 3. PEKERJAAN PENGASPALAN AREA DROP OFF LOBBY



**BEFORE**



**AFTER**





## 4. PEKERJAAN PENGECATAN ULANG LAPANGAN TENIS



**BEFORE**



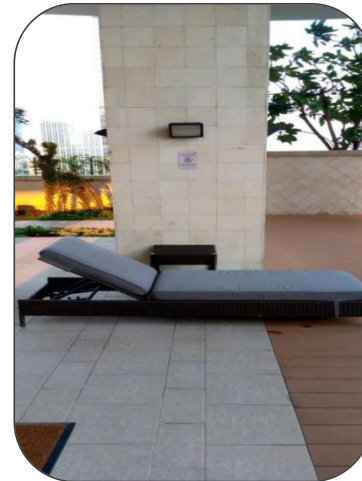
**AFTER**



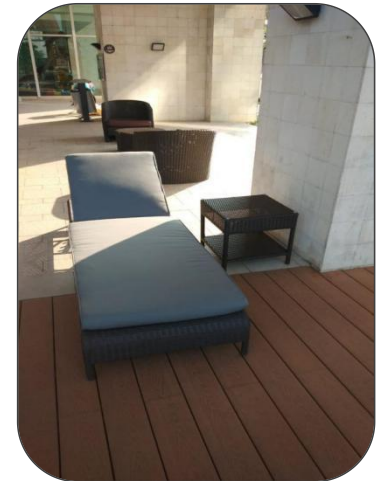
## 5. PENGGANTIAN BANGKU ROTAN KOLAM RENANG KINTAMANI



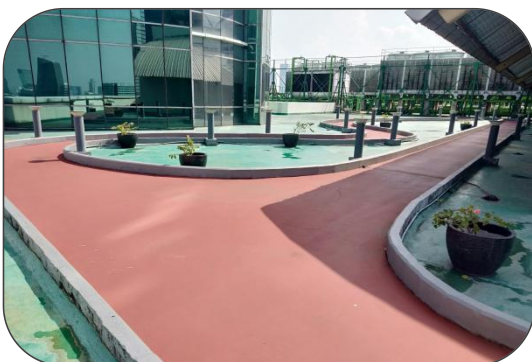
**BEFORE**



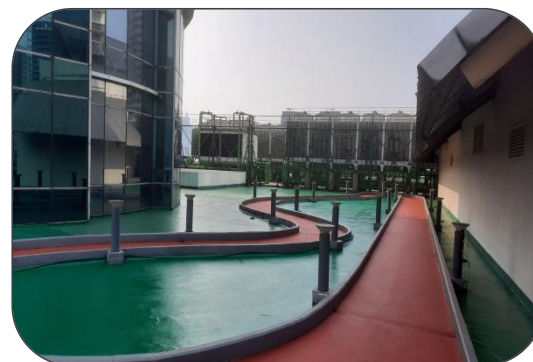
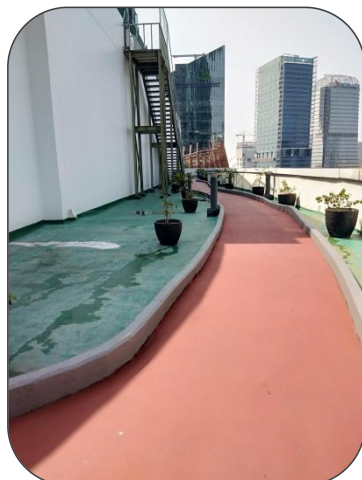
**AFTER**



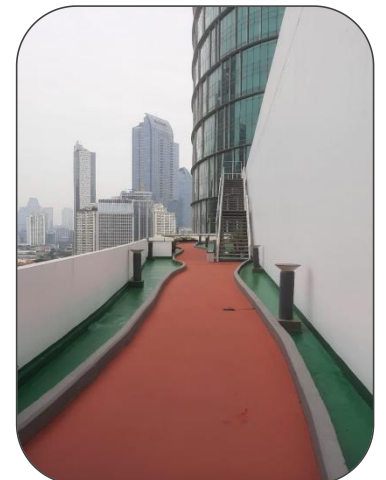
## 6. PENGECATAN JOGGING TRACK



**BEFORE**



**AFTER**





## 7. PEMBUATAN RUANG BILAS MOBIL DI P5



**BEFORE**



**AFTER**

## 8. PENAMBAHAN TITIK CCTV DI AREA PARKIR, LOBBY & B1



**BEFORE**



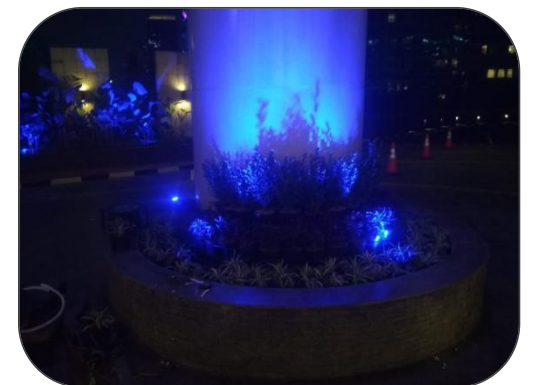
**AFTER**



## 9. REDESIGN TAMAN PILAR AREA PUTARAN DROP OFF



**BEFORE**



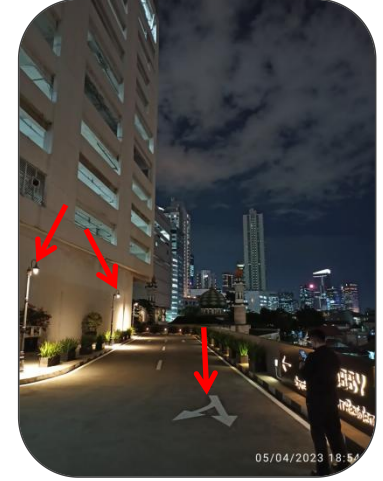
**AFTER**



## 10. PENEMPATAN LAMPU PJU DAN MARKA JALAN DROP OFF

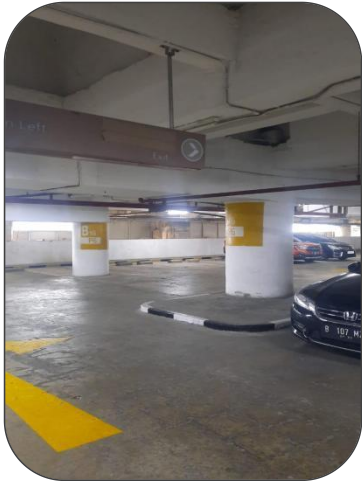
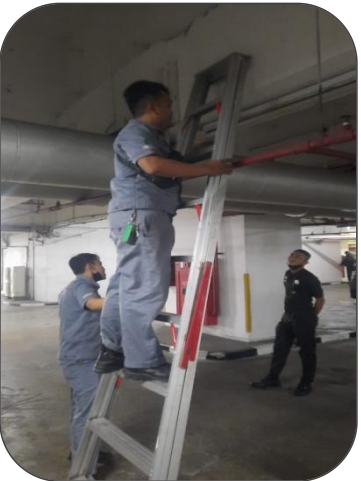


**BEFORE**

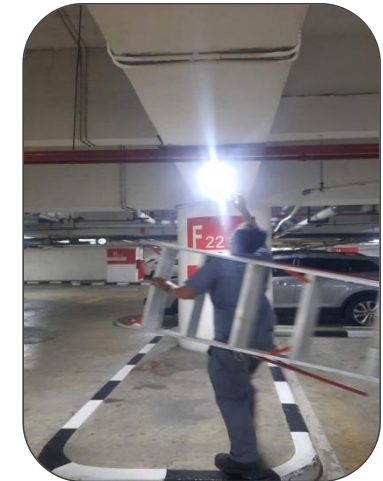
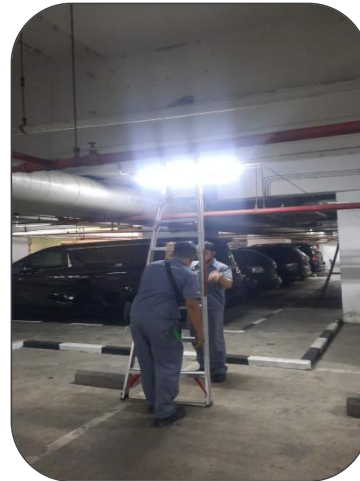


**AFTER**

## 11. PENGGANTIAN LAMPU TL 36 WATT MENJADI LED T8 16 WATT DI AREA PARKIR



**BEFORE**

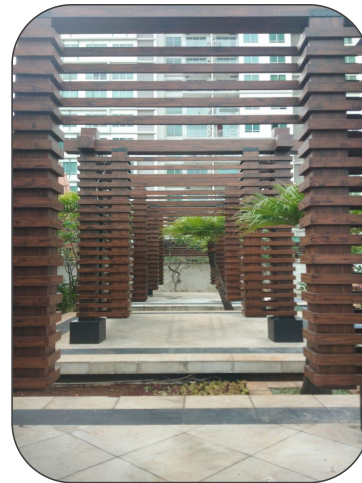


**AFTER**

## 12. PERBAIKAN GAZEBO PODIUM KINTAMANI



**BEFORE**



**AFTER**



**13. PERBAIKAN WATER ROOF TANK TOWER UBUD DAN KINTAMANI**



**BEFORE**



**AFTER**

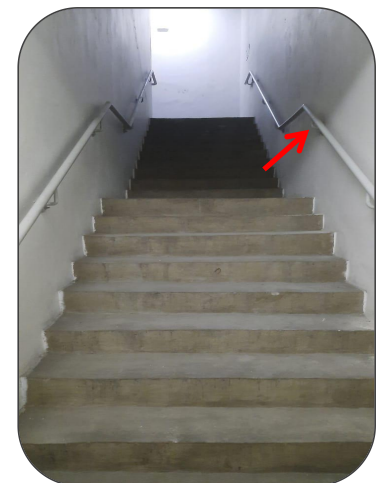
**14. PENAMBAHAN RALLING TANGGA EXIT TOWER UBUD & KINTAMANI LANTAI 39 - 29**



**BEFORE**



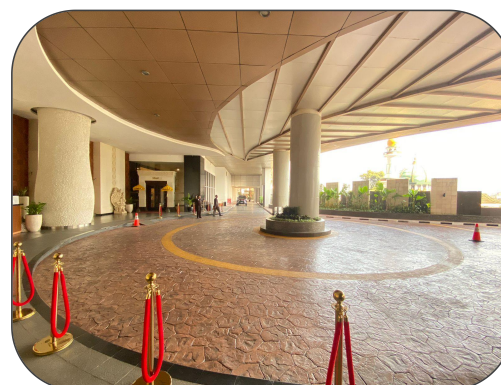
**AFTER**



**15. PENGGANTIAN BATU WAIRAU MENJADI STAMPED CONCRETE JALAN DROP OFF LOBBY**



**BEFORE**



**AFTER**

